



# INDIAN SCHOOL AL WADI AL KABIR

<b>Class: VI</b>	<b>Department: ENGLISH</b>	<b>Date of submission: MAY 2026</b>
<b>Worksheet No.5</b>	<b>THE RAVEN AND THE FOX</b>	<b>Note: TO BE DONE IN CLASS</b>

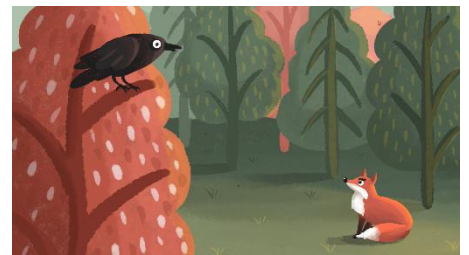
## I. Word Bank

Word	Meaning
1. perched	(i) a small piece of food
2. morsel	(ii) looked with interest at something
3. seek	(iii) feeling that you are better than others
4. pride	(iv) sat on a branch
5. eyed	(v) to look for something
6. limb	(vi) a smaller area of forest with similar kind of trees.
7. woods	(vii) branch of a tree

1. (iv)    2. (i)    3. (v)    4. (iii)    5. (ii)    6. (vii)    7. (vi)

## II. Answer the following with reference to the context.

A. *The Raven, who did not see the joke,  
Forgot that his voice was just a croak.  
He opened his beak, in his foolish pride—*



- Why did the Raven open his beak?  
**Ans: Raven opened his beak to sing as the Fox flattered him.**
- Complete the following with one word from the given lines.  
Fox: Clever :: Raven : **Foolish**
- Why does the Raven forget that his voice is just a croak?  
**Ans: Raven forgets that his voice is just a croak. It is due to his pride. He falls into a net woven by the clever Fox.**
- Assertion (A): The Raven opened his beak because he wanted to prove his musical ability to the Fox.

Reasoning (R): The Raven was blinded by his own vanity and forgot his natural physical limitations.

- Both (A) and (R) are true, and (R) is the correct explanation of (A).**
- Both (A) and (R) are true, but (R) is not the correct explanation of (A).
- (A) is true, but (R) is false.
- (A) is false, but (R) is true.



## III. Answer the following questions.

- Why does Reynard say that pride is not wise?  
**Ans: Reynard says that pride is not wise because it led the Raven to foolishly open his beak and lose his food.**

2. Give one reason why the teaching is quite a surprise.

**Ans: The teaching is quite a surprise because the Raven did not expect to be tricked by the Fox's compliments and lose his food.**

\*\*\*\*\*